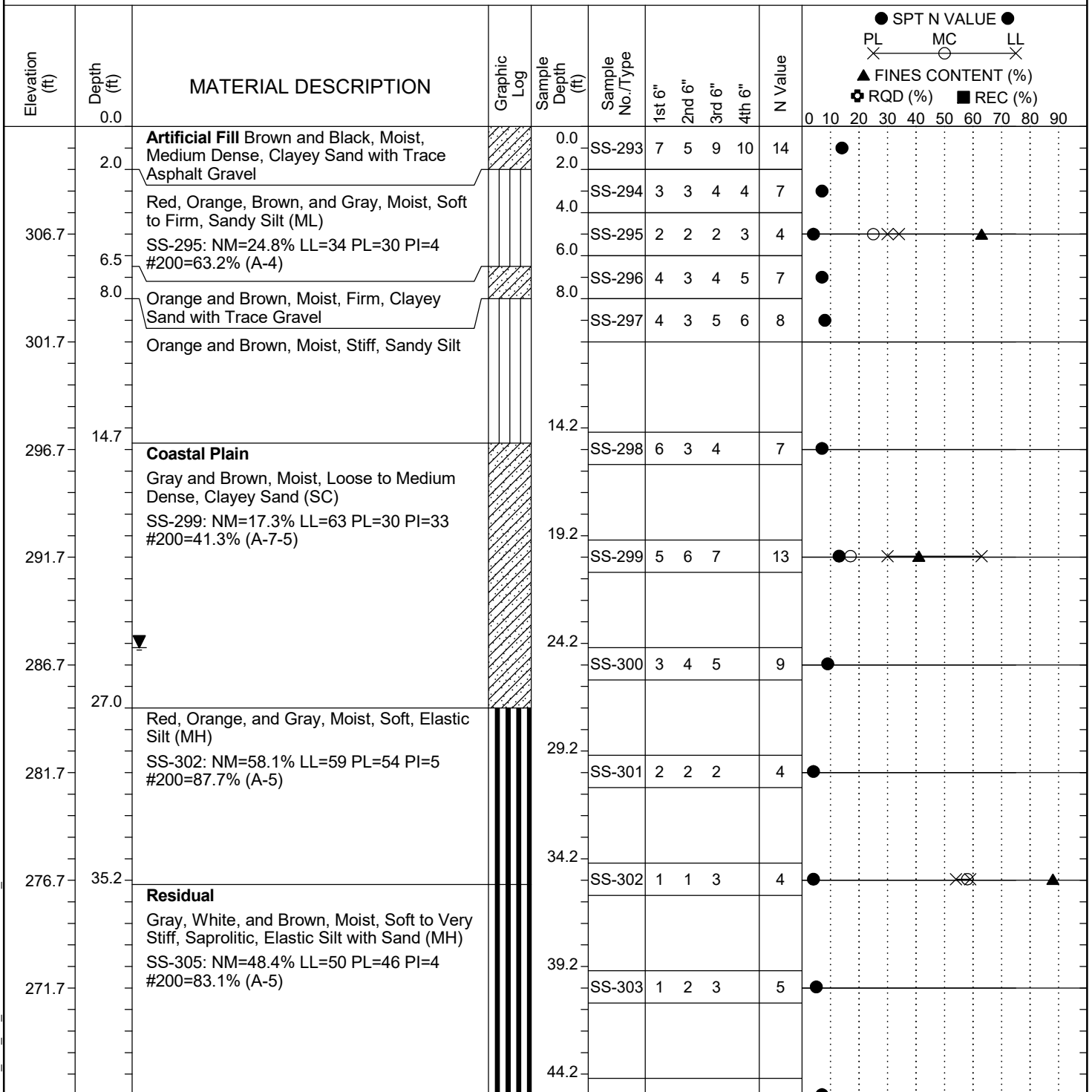


Project ID:	P039719	County:	Richland	Boring No.:	G-114
Site Description:	Carolina Crossroads Phase 2			Route:	Ramp
Eng./Geo.:	M. Stanbury	Boring Location:	397+51	Offset:	34 RT
Elev.:	311.7 ft	Latitude:	34.0394073	Longitude:	-81.09551299
Total Depth:	70 ft	Soil Depth:	70 ft	Core Depth:	N/A ft
Date Started:	3/8/2022			Date Completed:	3/8/2022
Bore Hole Diameter (in):	2.25	Sampler Configuration		Liner Required:	Y (N)
Liner Used:	Y (N)	Drill Machine:	D-50 #439	Drill Method:	RW
Hammer Type:	Automatic	Energy Ratio:	90.8%	Core Size:	N/A
Driller:	R. Cassell	Groundwater:	TOB	24HR	24.2 ft



LEGEND

Continued Next Page

SC_DOT 20-81_CCR2_ICE_BH_MERGED.GPJ SCDOT_DATATEMPLATE.GDT 5/26/22

SAMPLER TYPE		DRILLING METHOD	
SS - Split Spoon	NQ - Rock Core, 1-7/8"	HSA - Hollow Stem Auger	RW - Rotary Wash
UD - Undisturbed Sample	CU - Cuttings	CFA - Continuous Flight Augers	RC - Rock Core
AWG - Rock Core, 1-1/8"	CT - Continuous Tube	DC - Driving Casing	